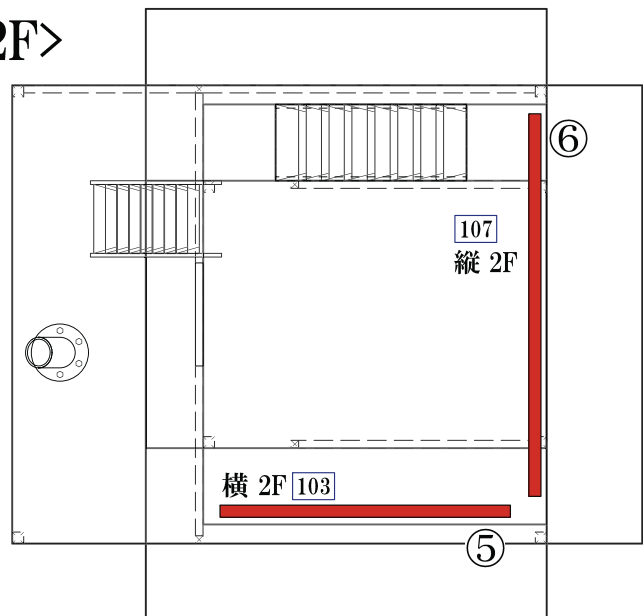
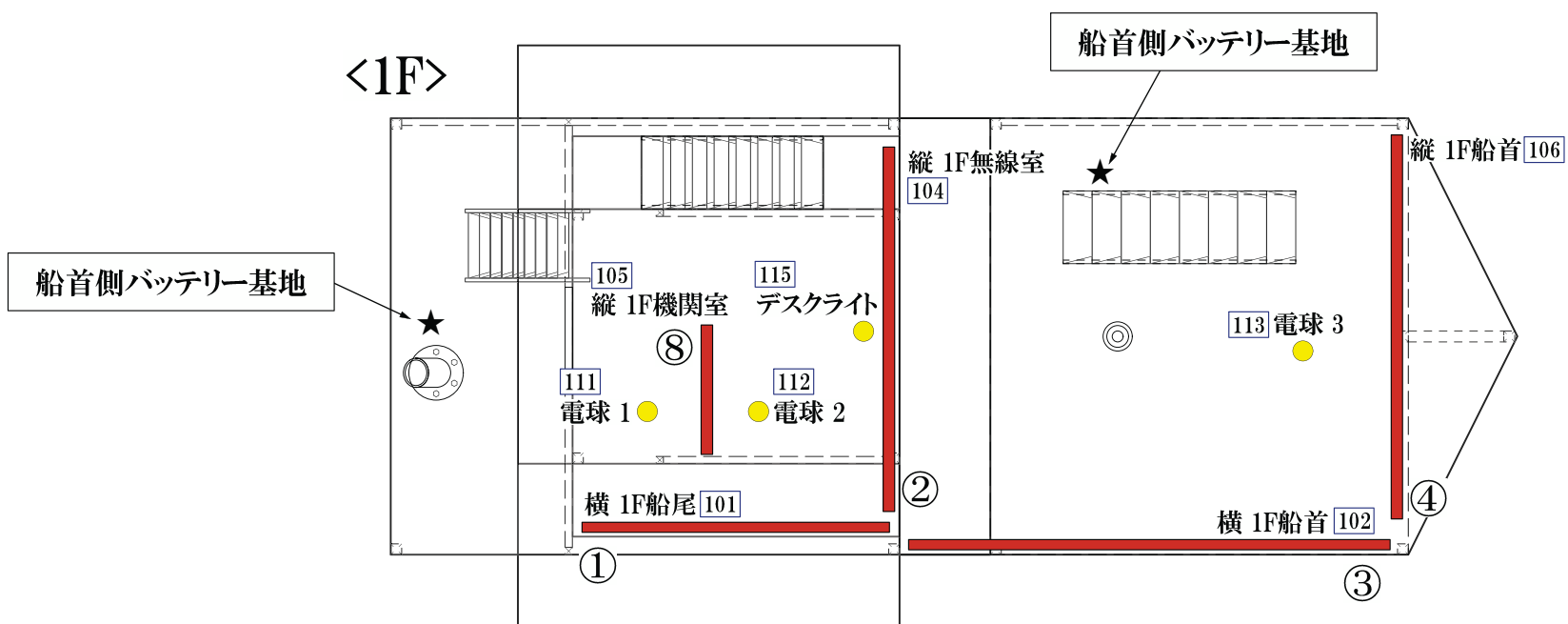


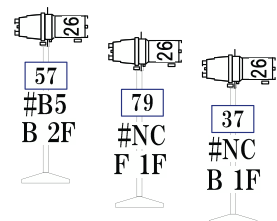
<2F>



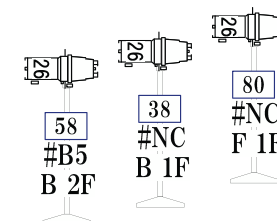
<1F>



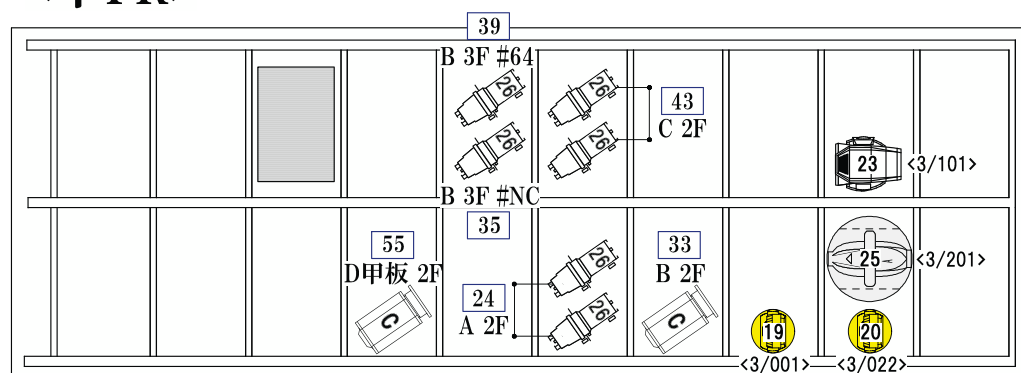
<下SS>



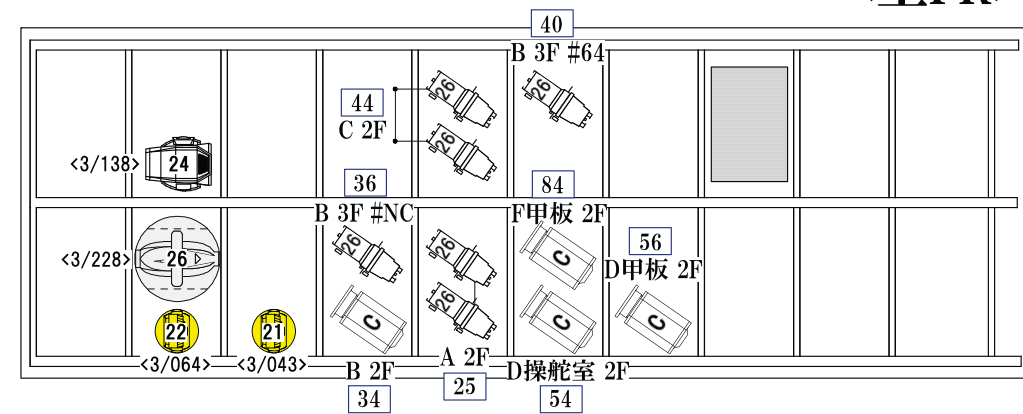
<上SS>



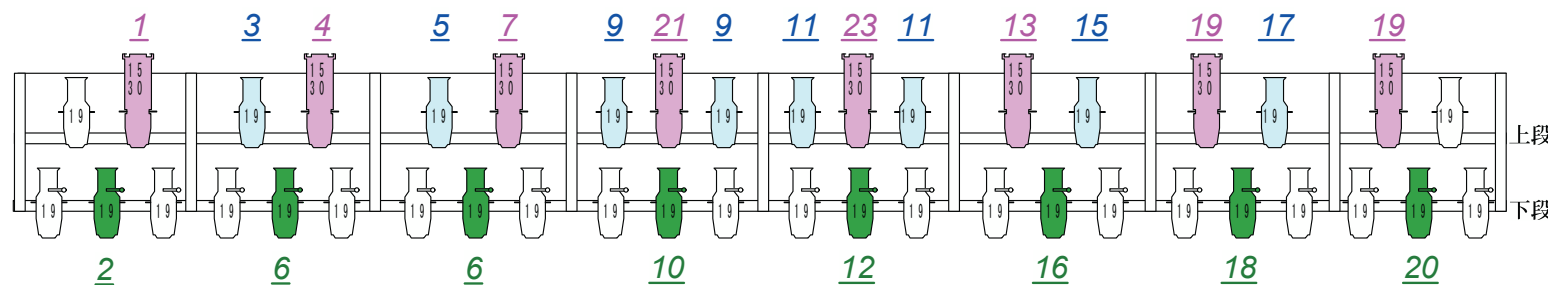
<下FR>



<上FR>



16 前Flat前 #NC×8 17 前Flatつながり #A3×8 18 前Flat前 #A4×8



<1CL>

Keys:				
<HALL>	RIKURI 26	mk3 (100v/320W/平行) (10kg)	Alpha700 (200v/700W/D型) (32kg)	VL1000 (200v/575W/C型) (40kg)
	6	4	2	2

Notes:

「最貧前線」
Dates: 2019/10/05~10/13

Place: 世田谷パブリックシアター
Production: 水戸芸術館
Load-in: 2019/10/03
Load-out: 2019/10/13

Plot: FOH/STAGE
Scale: 1/60 (A3)
Drawn: 2019/09/24
Revised: 0926
Drawing No.:

RIKURI POWER SUPPLY CO., LTD.
www.airpowersupply.co.jp
Design: 倉本泰史
Chief: 溝江 郁 Follow Chief: 菅沼 玲
Follow: 倉林 那実、田中 里歩